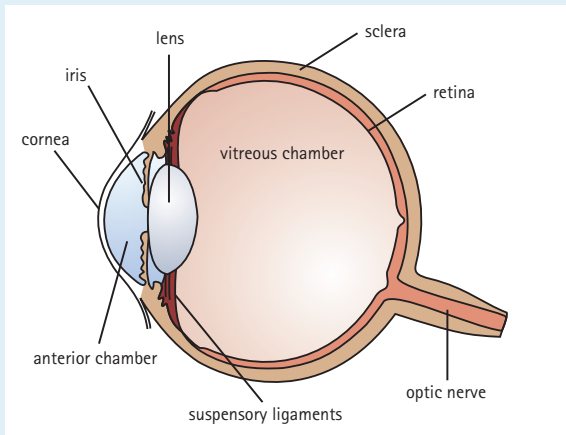


What is refractive surgery?

The cornea is the transparent front part of the eye that covers the iris, pupil, and anterior chamber. The cornea is responsible for approximately two-thirds of the eye's total optical power.



Refractive surgery improves the refractive state of the eye through surgical remodeling of the cornea. The most common method is to use excimer lasers to reshape the curvature of the cornea.

Benefits

Successful refractive eye surgery can reduce common vision disorders such as myopia, hyperopia, and astigmatism. Refractive surgery improves vision and quality of life by decreasing or eliminating dependency on eye glasses or contact lenses.

Risks

Risks include vision problems, such as, ghosting, halos, starbursts, double-vision, and dry-eye syndrome. Procedures that create a permanent flap in the cornea (such as LASIK), may also result in traumatic flap displacement years after the surgery.

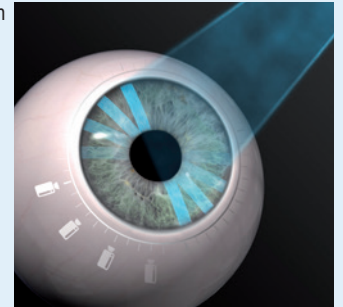
How to minimize the risk?

Those considering refractive eye surgery should have a complete pre-operative screening eye examination which should include Scheimpflug imaging, corneal topography and corneal thickness measurement from the OCULUS Pentacam® to screen for any abnormalities.

The Pentacam® examination

Your eye doctor is using state-of-the-art technology called the Pentacam® to examine your eyes.

The Pentacam® has a high speed rotating camera that moves around the eye and without touching your eye, takes many pictures of your cornea, crystalline lens and anterior chamber in less than 2 seconds. The Pentacam® provides precise information about the anterior chamber, the shape and the curvature of the front and back surfaces of the cornea and corneal thickness.



Results can be transferred to your surgeon's iPad or exam lane computer for professional medical diagnosis and patient consultation.



Planning for surgery

Pentacam® takes high-resolution pictures and provides precise measurements to your doctor for optimal surgical planning. Intelligent analysis programs help substantiate decisions. An examination using the Pentacam® offers patients the highest degree of safety. The Pentacam® can help the doctor determine whether the eye is suitable for surgical intervention. Your doctor may choose to show you the real pictures of the eye and color maps to discuss the condition and your treatment options. The overview display of all Scheimpflug images taken in an examination allows the surgeon to visually identify any concerns with the cornea, lens and anterior chamber.



Follow up after surgery

After surgery, a Pentacam® examination will show the post-op results. Surgical success is documented completely from start to finish. Even the smallest irregularities in the healing process are detected early.

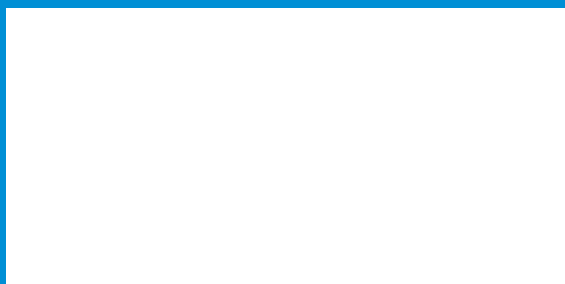
Wellness exam and general screening with the Pentacam®

Early detection is key to preserving your eyesight. Many eye disorders that lead to reduced vision or blindness are treatable if diagnosed early. Regular eye wellness exams are recommended by eye care professionals. The Pentacam® is an excellent screening device that can detect eye diseases and other abnormalities and bring your doctor's attention to the areas of concern.

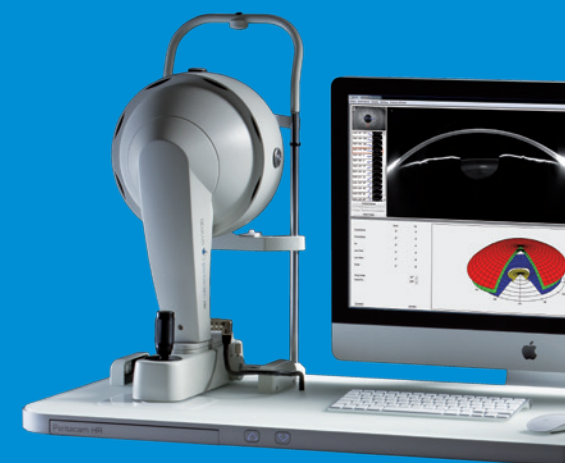


Examination with the
OCULUS Pentacam®
for Refractive Surgery

Ask your doctor about the
Pentacam® and other advanced
technologies in this practice!



Note: The Pentacam® helps with the diagnosis/conditions but the final decision must be made by you and your physician.



 OCULUS®